



GAS PRODUCTS

QUALITY
RELIABILITY
SAFETY





GAS PRODUCTS

*More Than 40 Years
of Excellence*



MESSAGE FROM **CEO**

The CEO of every successful business knows that excellence in the provision of any service can only be achieved by constantly listening to the customer. Yet, many companies fail to provide the customer with a proper communication channel to achieve this objective. International Engineering Co. represents both the reason of its formation as well as the keystone for its swift maturity and success in a very short period.

We have developed sophisticated operational, financial, and management systems that allow us to concentrate on areas of significant potential and quickly adapt to changing conditions and opportunities.

Upholding business ethics and total compliance of safety and environment protective protocol is a major indicator we look at when evaluating management success. I encourage company's leadership, at all levels, to keenly participate in initiatives leading to behavioral alignment of our teams with two most important corporate objectives.

A steady flow of orders from both our domestic as well as Regional clients is a very encouraging sign and a true reflection of our clients' trust and confidence on International Engineering Co. management's rich heritage and wide and diversified experience.

And this recognition is based on International Engineering Co. management continuously successful track record in delivering Products over the last four decades in the LPG Products sector.

I thank to all our Quality Control staff, management and marketing staff and our valued customer for their deep interest and confidence on International Engineering Co.

Nasir Ahmad.



Timeline

- 1981.** Started manufacturing electric fans for a wide range of models & designs with the capacity of 100 pcs / day.
- 1985.** Production of fans was enhanced up to 300 pcs / day.
- 1990.** Switch from the manufacturing of fans in to camping type LPG cylinder with the range of 1 kg to 6 kg cylinder.
- 1992.** We registered as manufacturers of domestic appliances and LPG Cylinders with International Standard and enhanced the production capacity up to 300 pieces per day.
- 1995.** Along with the local market share company started export to K.S.A. Bahrain and Dubai.
- 1999.** Formed another trading business, which started import of LPG equipment from Malaysia.
- 2001.** Got the sole distribution rights from Unity Gas Appliances Malaysia to sell its products i.e. LPG regulators, Gas Stoves etc. for Pakistan, Afghanistan & Bahrain.
- 2003.** Planned to move the manufacturing unit to enhance the production capacity and to improve the quality to meet enhanced demand from local as well as export market.
- 2005.** Purchase land and building for new planned manufacturing unit.
- 2007.** Started new manufacturing unit and got Unit Certification from TUV NORD & ISO 9001:2000 (Germany).
- 2008.** To meet the increasing demand of domestic & commercial cylinder made another manufacturing unit equipped with high quality and high performance advanced technology machinery.
- 2008.** Production capacity for LPG company cylinders increased up to 600 pcs / day.
- 2012.** LPG regulator manufacturing plant Installed with initial production capacity of 300/- PCS per day.
- 2013.** Product Certification and Unit Certification from Intertech to meet the Quality Saudia Standard & Export to KSA.
- 2016.** Production Capacity enhances with 800/- PCS per day and to increase export capacity volume likewise exports of Goods.
- 2018.** We installed first ever Gas Instant Water Heater manufacturing plant. Have Lion share of market in Instant Water Heater Production Line till date.
- 2019.** In Compliance with our Strategic Growth Mission, we opened Multiple Outlets in multiple cities of Pakistan and got our POS Integrated with Federal Board of Revenue Pakistan for ensuring transparency and ensure Compliance with Local Laws of Pakistan.
- 2021.** Expansion of Water Heaters Manufacturing Line with Electric Water Heater Products.

PROFILE

International Engineering company has been established since 1990, The company has vast experience in manufacturing of products like as LPG Cylinder ,Regulator & burner. Our company have fully skilled worker in their particular field and they help us producing the export quality products therefore we have earned the confidence of our customers in countries like Bahrain , Oman & Saudi Arabia. Customers satisfaction is the first priority of our company by keeping in view the design requirements, quality, on time delivery and the concerned legal regulations. International Engineering company is certified with ISO 9001 : 2015 & Authorized manufacturer from Oil and Gas Regulatory Authority (OGRA) Govt. of Pakistan.

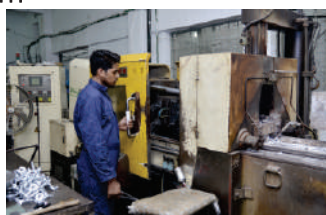
Certifications





Machinery Profile

- Hydraulic Press for Doom Draw
- Trimming Machine
- Off-Setting Machine
- Mechanical Press for Bung Holing
- Submerged arc Welding Machine
- Hydraulic Press Base Ring Draw
- Mechanical Presses
- Sheet Rolling Machine
- Sheet Bending Machine
- Shot Blast Machine Conveyer Type
- Shot Blast Machine Rolling Type
- Hydro Test Unit with all Accessories (Calibrated from PCSIR)
- Air Compressors
- Digital Scale (Calibrated from PCSIR)
- Anyling Furnace with O2 Cooling Chambers
- Painting Unit
- Dies Set
- Lath Machine
- Drill Machine
- Valve Leak Test System
- Water Capacity Jars
- Jig and Fixtures
- Diesel Generators
- Welding Plants





Quality Control





Product Range

- Camping LPG Cylinder
- Camping Portable Burner & Lamp
- Domestic & Commercial Cylinder
- LPG Regulators
- Stoves
- Accessories



Scan to view
Product Details



LPG Camping Cylinders



▲
TS-PC-0.6
(0.6kg)



▲
TS-PC-2
(2kg)



▲
TS-PC-3
(3kg)



▲
TS-PC-4
(4kg)



▲
TS-PC-5
(5kg)

LPG CAMPING CYLINDER

CODE	SIZE	CONNECTION	DESCRIPTION
TS-PC-0.6	0.6 kg	M14 X 1.5	LPG CAMPING CYLINDER - 1.2 Ltr
TS-PC-2	2 kg		LPG CAMPING CYLINDER - 4.8 Ltr
TS-PC-3	3 kg		LPG CAMPING CYLINDER - 7 Ltr
TS-PC-4	4 kg		LPG CAMPING CYLINDER - 9.5 Ltr
TS-PC-5	5 kg		LPG CAMPING CYLINDER - 12 Ltr



LPG Camping Cylinders



▲
TS-PCL-4
(4 kg)



▲
TS-PCL-6
(6 kg)



▲
TS-PCL-5
(5 kg)

LPG CAMPING CYLINDER

CODE	SIZE	CONNECTION	DESCRIPTION
TS-PCL-4	4 kg	M14 X 1.5	LPG CAMPING CYLINDER - 9.5 Ltr
TS-PCL-5	5 kg		LPG CAMPING CYLINDER - 12 Ltr
TS-PCL-6	6 kg		LPG CAMPING CYLINDER - 14.4 Ltr

LPG Camping Cylinders



TS-VC-2



TS-VC-3



TS-VC-4

LPG CAMPING CYLINDER

CODE	SIZE	CONNECTION	DESCRIPTION
TS-VC-2	2 kg	G 3/8 & W 20 X 1/14	LPG CAMPING CYLINDER - 4.8 Ltr
TS-VC-3	3 kg		LPG CAMPING CYLINDER - 7 Ltr
TS-VC-4	4 kg		LPG CAMPING CYLINDER - 9.5 Ltr
TS-VC-6	6 kg		LPG CAMPING CYLINDER - 14.4 Ltr



TS-VC-6



Camping Portable Burner & Lamp



▲
TS-IM-1



▲
TS-IM-2



▲
TS-PS1



▲
TS-PS-2



▲
TS-PS3



▲
TS-N2



▲
TS-BB



▲
TS-BBRJ



▲
TS-VH-1



▲
TS-VL-1

LPG CAMPING CYLINDER

CODE	CONNECTION	DESCRIPTION
TS-IM-1	M14 X 1.5	PORTABLE CAMPING STOVE
TS-IM-2		PORTABLE CAMPING STOVE
TS-PS-1		PORTABLE CAMPING STOVE
TS-PS-2		PORTABLE CAMPING STOVE
TS-PS-3		PORTABLE CAMPING STOVE
TS-N2		PORTABLE CAMPING STOVE
TS-BB	G 3/8 & W 20 X 1/14	PORTABLE CAMPING STOVE
TS-BBRJ		PORTABLE CAMPING STOVE
TS-VL-1		PORTABLE CAMPING LAMP
TS-VH-1		PORTABLE CAMPING HEATER



Domestic & Commercial Cylinder



TS-DC-2
(2kg)



TS-DC-4
(4kg)



TS-DC-6
(6kg)



TS-DC-12
(11.8kg)



TS-CC-1
(22kg)



TS-CC-2
(45kg)

CODE	SIZE	CONNECTION	DESCRIPTION
TS-DC-2	(2kg)	OUTLET ø 20mm (G.52) ø 21mm (G.53) ø 22mm (G.54)	LPG CYLINDER - 4.8 Ltr
TS-DC-4	(4kg)		LPG CYLINDER - 9.5 Ltr
TS-DC-6	(6kg)		LPG CYLINDER - 14.4 Ltr
TS-DC-12	(11.8kg)		LPG CYLINDER - 26.2 Ltr
TS-CC-1	(22kg)		LPG CYLINDER - 52 Ltr
TS-CC-2	(45kg)		LPG CYLINDER - 108 Ltr

LPG Regulators

R-01



LOW PRESSURE REGULATOR QUICK-ON VARIABLE PRESSURE

Inlet : ϕ 20 mm, ϕ 21 mm, ϕ 22 mm
(G.52) (G.53) (G.54)
Outlet: ϕ 10mm (H.50)
Pressure : 29-90 mbar
Capacity : 1.5 kg/h

R-02



HIGH PRESSURE REGULATOR QUICK-ON VARIABLE PRESSURE

Inlet : ϕ 20 mm, ϕ 21 mm, ϕ 22 mm
(G.52) (G.53) (G.54)
Outlet: ϕ 10mm (H.50)
Pressure : 0-4 bar

R-03



LOW PRESSURE REGULATOR QUICK-ON FIXED PRESSURE

Inlet : ϕ 20 mm, ϕ 21 mm, ϕ 22 mm
(G.52) (G.53) (G.54)
Outlet: ϕ 10mm (H.50)
Pressure : 50 mbar
Capacity : 1.5 kg/h

R-04



LOW PRESSURE REGULATOR QUICK-ON VARIABLE PRESSURE

Inlet : ϕ 20 mm, ϕ 21 mm, ϕ 22 mm
(G.52) (G.53) (G.54)
Outlet: ϕ 10mm (H.50)
Pressure : 29-50 mbar
Capacity : 1.5 kg/h

R-05



LOW PRESSURE REGULATOR QUICK-ON VARIABLE PRESSURE

Inlet : ϕ 20 mm, ϕ 21 mm, ϕ 22 mm
(G.52) (G.53) (G.54)
Outlet: ϕ 10mm (H.50)
Pressure : 29-70 mbar
Capacity : 1.5 kg/h



R-01D

LOW PRESSURE REGULATOR QUICK-ON FIXED PRESSURE

Inlet : ϕ 20 mm, ϕ 21 mm, ϕ 22 mm
(G.52) (G.53) (G.54)
Outlet: ϕ 10mm (H.50)
Pressure : 30 mbar
Capacity : 1.5 kg/h



R-01S

LOW PRESSURE REGULATOR QUICK-ON FIXED PRESSURE

Inlet : ϕ 20 mm, ϕ 21 mm, ϕ 22 mm
(G.52) (G.53) (G.54)
Outlet: ϕ 10mm (H.50)
Pressure : 30 mbar
Capacity : 1.5 kg/h



R-01J

LOW PRESSURE REGULATOR QUICK-ON FIXED PRESSURE (JUNIOR)

Inlet : ϕ 20 mm, ϕ 21 mm, ϕ 22 mm
(G.52) (G.53) (G.54)
Outlet: ϕ 10mm (H.50)
Pressure : 30 mbar
Capacity : 1.5 kg/h



R-01E

LOW PRESSURE REGULATOR QUICK-ON FIXED PRESSURE

Inlet : ϕ 20 mm, ϕ 21 mm, ϕ 22 mm
(G.52) (G.53) (G.54)
Outlet: ϕ 10mm (H.50)
Pressure : 30 mbar
Capacity : 1.5 kg/h



R-06M

LOW PRESSURE REGULATOR FIXED PRESSURE THREADED INLET

Inlet : G 3/8 LH (G.33)
Outlet: ϕ 10mm (H.50)
Pressure : 30 mbar
Capacity : 1.5 kg/h

LPG Regulators & Adapters



R-07SU

LOW PRESSURE REGULATOR VARIABLE PRESSURE THREADED INLET

Inlet : 0.880" - 14 NGO
 Outlet: $\phi 10\text{mm}$ (H.50)
 Pressure : 20-60 mbar
 Capacity : 1.5 kg/h



A-03 H2

ADAPTER DIRECT PRESSURE QUICK-ON HORIZONTAL OUTLET

Inlet : $\phi 20\text{ mm}$, $\phi 21\text{ mm}$, $\phi 22\text{ mm}$
 (G.52) (G.53) (G.54)
 Outlet: W 20 x 1/14 M
 Pressure : Direct



R-08

LOW PRESSURE REGULATOR VARIABLE PRESSURE THREADED INLET

Inlet : W 20 x 1/14 LH
 Outlet: $\phi 10\text{mm}$ (H.50)
 Pressure : 20-60 mbar
 Capacity : 1.5 kg/h



A-03 H3

ADAPTER DIRECT PRESSURE QUICK-ON HORIZONTAL OUTLET

Inlet : $\phi 20\text{ mm}$, $\phi 21\text{ mm}$, $\phi 22\text{ mm}$
 (G.52) (G.53) (G.54)
 Outlet: G 3/8 M
 Pressure : Direct



A-01V

ADAPTER DIRECT PRESSURE QUICK-ON ONE WAY VALVE

Inlet : $\phi 20\text{ mm}$, $\phi 21\text{ mm}$, $\phi 22\text{ mm}$
 (G.52) (G.53) (G.54)
 Outlet: $\phi 10\text{mm}$ (H.50)
 Pressure : Direct



A-04 V1

ADAPTER DIRECT PRESSURE QUICK-ON VERTICAL OUTLET

Inlet : $\phi 20\text{ mm}$, $\phi 21\text{ mm}$, $\phi 22\text{ mm}$
 (G.52) (G.53) (G.54)
 Outlet: $\phi 10\text{mm}$ (H.50)
 Pressure : Direct



A-02 V

ADAPTER DIRECT PRESSURE QUICK-ON TWO WAY VALVE

Inlet : $\phi 20\text{ mm}$, $\phi 21\text{ mm}$, $\phi 22\text{ mm}$
 (G.52) (G.53) (G.54)
 Outlet: $\phi 10\text{mm}$ (H.50)
 Pressure : Direct



A-04 V2

ADAPTER DIRECT PRESSURE QUICK-ON VERTICAL OUTLET

Inlet : $\phi 20\text{ mm}$, $\phi 21\text{ mm}$, $\phi 22\text{ mm}$
 (G.52) (G.53) (G.54)
 Outlet: W 20 x 1/14 M
 Pressure : Direct



A-03 H1

ADAPTER DIRECT PRESSURE QUICK-ON HORIZONTAL OUTLET

Inlet : $\phi 20\text{ mm}$, $\phi 21\text{ mm}$, $\phi 22\text{ mm}$
 (G.52) (G.53) (G.54)
 Outlet: $\phi 10\text{mm}$ (H.50)
 Pressure : Direct



A-04 V3

ADAPTER DIRECT PRESSURE QUICK-ON VERTICAL OUTLET

Inlet : $\phi 20\text{ mm}$, $\phi 21\text{ mm}$, $\phi 22\text{ mm}$
 (G.52) (G.53) (G.54)
 Outlet: G 3/8 M
 Pressure : Direct



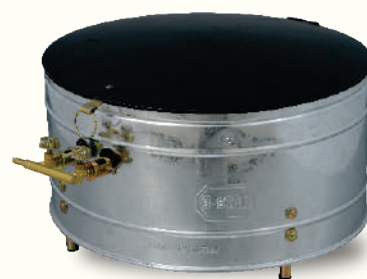
Stove 2in1



TS-TBD 13



TS-TBD 17



TS-TBD 21



TS-TB 555



TS-TB 666



TS-TB 777



TS-TB 888

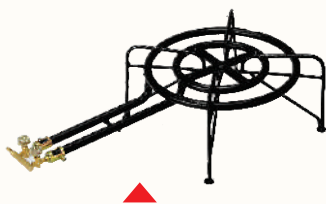


TS-TB 999

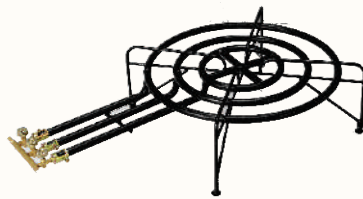
CODE	SIZE		CONNECTION	DESCRIPTION
	Diameter	Height		
TS-TBD 13	Ø32 cm	26 cm	Inlet : Ø10 mm Outlet : M10x1M	Single Burner Bread Stove 2 in 1
TS-TBD 17	Ø42 cm	26 cm		Double Burner Bread Stove 2 in 1
TS-TBD 21	Ø52 cm	26 cm		Double Burner Bread Stove 2 in 1
TS-TB 555	Ø45 cm	15 cm		Single Burner Bread Stove 2 in 1
TS-TB 666	Ø55 cm	15 cm		Double Burner Bread Stove 2 in 1
TS-TB 777	Ø65 cm	15 cm		Double Burner Bread Stove 2 in 1
TS-TB 888	Ø45 cm	15 cm		Single Burner Bread Stove 2 in 1
TS-TB 999	Ø55 cm	15 cm		Double Burner Bread Stove 2 in 1



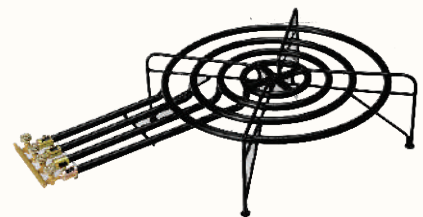
Stove



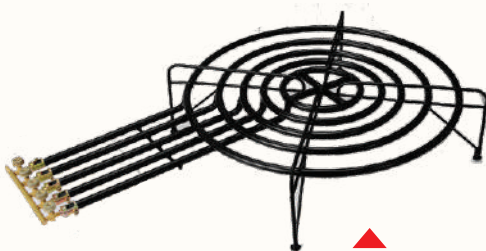
TS-KS 2



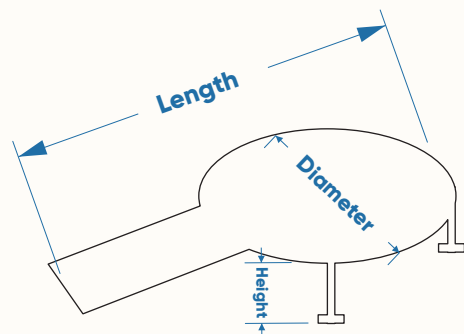
TS-KS 3



TS-KS 4



TS-KS 5



CODE	SIZE			CONNECTION	DESCRIPTION
	Length	Diameter	Height		
TS-KS 2	66 cm	Ø38 cm	21 cm	Inlet : Ø10 mm Outlet : M10x1M	Two Ring Commercial Stove
TS-KS 3	82 cm	Ø54 cm	21 cm		Three Ring Commercial Stove
TS-KS 4	90 cm	Ø60 cm	21 cm		Four Ring Commercial Stove
TS-KS 5	115cm	Ø78 cm	23 cm		Five Ring Commercial Stove



Accessories

Wind Protection Screen



WS 30



WS 40



WS 50



WS 60



WS 70

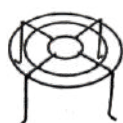
Grill Stand



Grill Size
8"



Grill Size
8"
with Legs



Grill Size
11"
with Legs



Grill Size
8"
Folding



Grill Size
11"
Folding



Grill
20



Grill
25



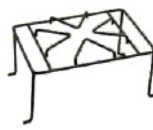
Grill
30



Grill Size
10x10



Grill Size
12x12



Grill Size
10x14



Grill
Folding Small



Grill
Folding Large

Valve & Spare Parts



V-01

Tab Valve

INLET OUTLET

Ø10mm , M10x1M



V-02

Two Needle Valve

INLET OUTLET

Ø10mm , M10x1M



V-03

Three Needle Valve

INLET OUTLET

Ø10mm , M10x1M



V-04

Four Needle Valve

INLET OUTLET

Ø10mm , M10x1M



V-05

Five Needle Valve

INLET OUTLET

Ø10mm , M10x1M



V-06

Cylinder Valve

INLET OUTLET

M14x1.5 / M12x0.75



SP-01

CUP 1/2"



SP-02

CUP 3/4"



SP-03

CUP 1"



SP-04

THREE WAY
(T) NOZZLE



SP-05

THREE WAY
(Y) NOZZLE



SP-06

TWO WAY
(I) NOZZLE



SP-07

NOZZLE INNER
THREAD 1/2"F



SP-08

NOZZLE OUTER
THREAD 1/2"M



SP-09

NOZZLE + NUT
W20X1/14Sx F



SP-10

DIRECT FILLING
NOZZLE M14X1.5M



SP-11

AIR
RELEASER



SP-12

CYLINDER
FITTINGS



SP-13

SMALL BURNER
Ø 65MM



SP-14

BIG BURNER
Ø 85MM



SP-15

INJECTOR
For VALVE



SP-14

WASHER



SP-15

SCREW DRIVER

INTERNATIONAL ENGINEERING CO.



GAS PRODUCTS

f 3-STAR

3-STAR

www.3-star.com.pk

Amrat Pura , G.T Road , Gujranwala , 52250 , PAKISTAN.

